



Niche

Pre-Formed Ready for Tiling



Key Benefits

- Stylish & convenient
- Easy to install
- Has a built in flange
- Ready to tile or plaster
- Ideal for wet areas
- Various sizes

Three NEW sized niches have been added to the Multiboard range. The 600 x 300mm, 1200 x 400mm and the 800 x 400mm.

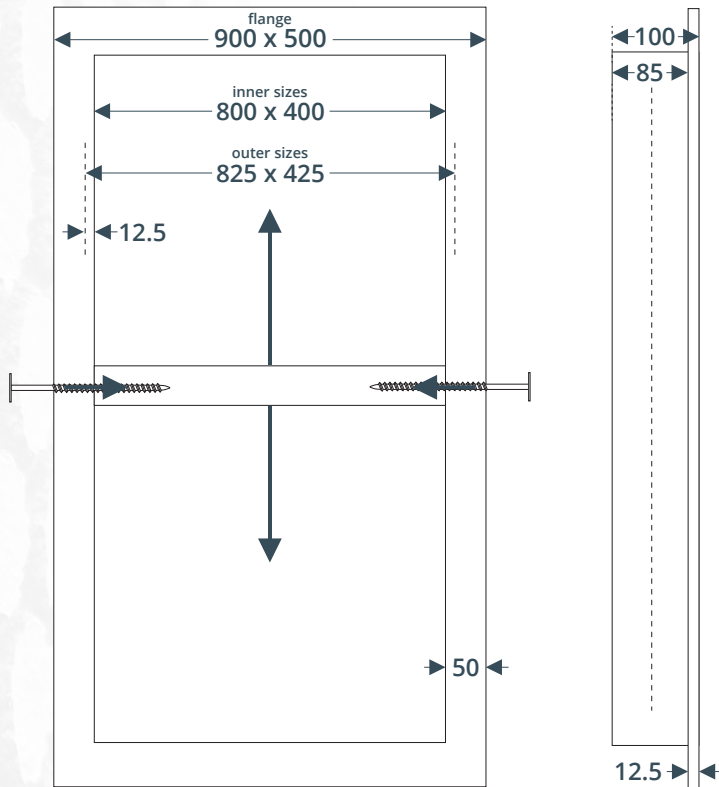
Ideal for shower areas or any wall where a recess is a desired feature, they offer a practical and time-saving solution. The 800 x 400mm niche features an adjustable shelf, allowing the insert to be positioned at the desired height.

All Marmox Niches are constructed from Marmox Multiboard, providing excellent strength, stability, and waterproof performance for long-lasting, reliable results.

Facts & Figures

Description	Size (mm)				Weight (kg)
	Thickness	Width	Length	Depth	
Niche	12.5	400	200	100	1.5
			300		2.0
			400		2.5
			500		3.0
			800		5.0
			1200	150	8.0
		600	300	100	3.0

Specification (800 x 400 with shelf)



800 x 400

Other Sizes

These have the same size flange and depth as above (*unless highlighted as different*)



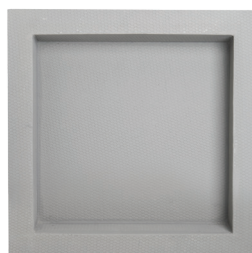
400 x 1200



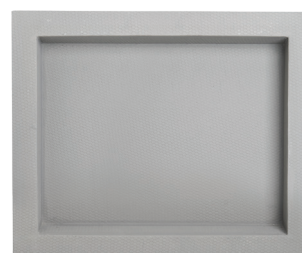
400 x 200



400 x 300



400 x 400



400 x 500



600 x 300

Marmox UK Ltd

Caxton House,
 101-103 Hopewell Drive,
 Chatham, Kent. ME5 7NP
 United Kingdom

For information and advice:

Tel: 01634 835290
 Email: sales@marmox.co.uk
 Web: www.marmox.co.uk