

Showerlay installation

Tools you will need:



Showerlay - Point Drain

Wooden Floors



Step 1

Decide where the Showerlay is to be positioned. Use a spirit level to make sure the floor is flat and level in all directions.

Note: You can trim the Showerlay by up to 100mm on any side in order to best fit it in your desired location.



Step 2

Once in desired position, use a thick marker to mark the drain position on the floor.

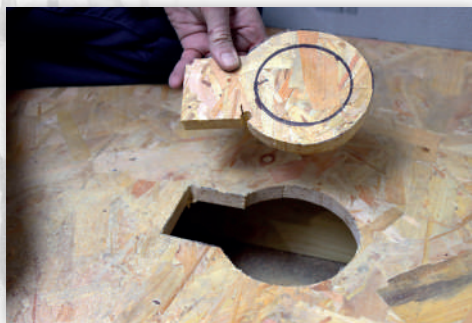
Optional: You can lower the Showerlay to joint level by marking around the edges and then cutting the floor board. The Showerlay cannot be supported by joists alone so support between the joists will be needed using noggins.



Step 3

Cut out the template and position it over the circle drawn on the floor, making sure the flat edge is pointing in the direction you want your pipework to head.

Now draw around the outside of the template with the marker.



Step 4

Cut out the shape with a jigsaw.

Note: You can trim the Showerlay by up to 100mm on any side in order to best fit it in your desired location.



Step 5

Place drain into the hole and line up with pipe work in the order shown.



Step 6

Screw together and make sure it all lines up like this.



Step 7

Now sweep the area clean.



Step 8

Use a full tube of Marmox MSP360 as shown. Making sure edges and around drain area are covered well.

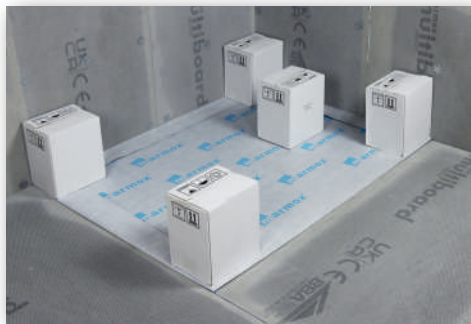
Alternatively, use a full bed of flexible cement based tile adhesive with a 10mm notched trowel .



Step 9

Lay the Showerlay into position and press down firmly, making sure the entire Showerlay is making full contact.

Again, use a spirit level to double check that all the edges of the Showerlay are level.



Step 10

Use a suitable weight in each corner and over the drain area. Leave to dry for 2hrs.

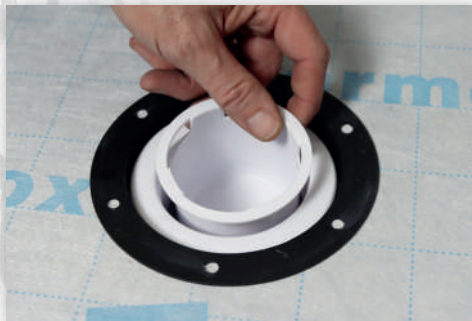
In the meantime, lay 20mm Marmox Multiboards on the surrounding floor.



Step 11

Reach through the drain hole and pull up the drain, holding it flush on the underside of the Showerlay while screwing in the threaded collar.

Screw tight with the funnel turned upside down, which doubles up as a key.



Step 12

Place the trap into position.



Step 13

Then insert the funnel.



Step 14

You can then screw in the grate holder.



Step 15

Use extension pieces as needed, depending on the thickness of tiles you are using. They are as follows

None = 10-16mm
 x1 ext = 20mm
 x2 ext = 25-27mm



Step 16

Use a further tube of Marmox MSP360 for the overhanging fleece.

First seal the fleece on one side of the Showerlay to the wall.



Step 17

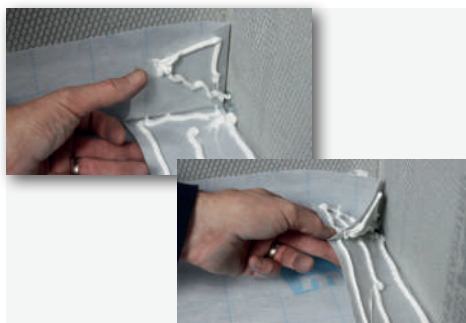
Using a flat-edged trowel, push the fleece onto the wall with a firm upward stroke.

Make sure it's smooth, fully sealed all the way along its length. Push out any air pockets.



Step 18

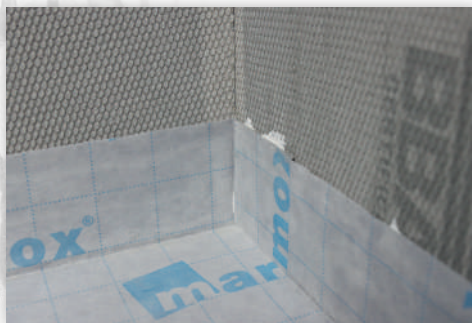
Before sealing the other fleece on the second edge of the Showerlay, fold the fleece corner in this fashion and rub along the fold with your finger to create fold lines.



Step 19

Run Marmox MSP360 all along the length of the second side of the Showerlay and in all the layers of the folded fleece, as shown.

If you have 2 corners, then repeat this process.



Step 20

Again, use the trowel to firmly smooth the fleece against the wall, taking particular attention to create flat corner areas, squeezing out any lumps or bulges.



Step 21

Now stick down the fleece on the remaining sides of the Showerlay to the surrounding floor, again using Marmox MSP360.



Step 22

Now run Marmox Self Adhesive Waterproof Tape around the wall, along the top of the fleece, to fully seal the joint.

Run your hand firmly along all the tape to make sure it is stuck to the wall with a little pressure.



Step 23

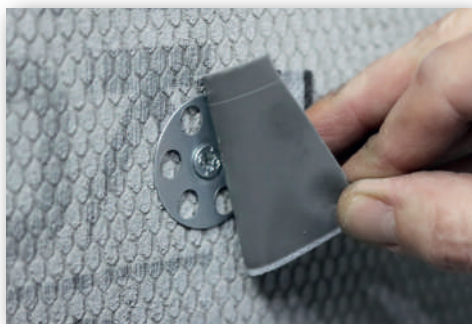
Continue on all side of the Showerlay.



Step 24

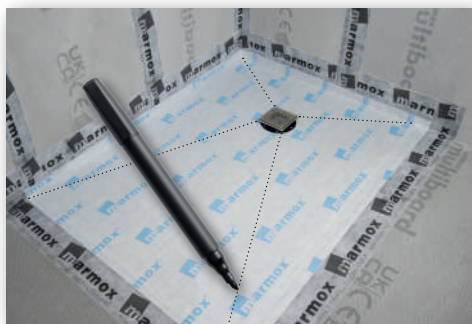
Apply Marmox Self Adhesive Waterproof Tape over any joints which will be in wet areas.

Be sure to run the vertical wall stripes in front of and not behind the tape which runs around the shower fleece, as shown.



Step 25

If you have used screw fixings on the floor or walls for the surrounding boards, it is advised to place a small square of the Marmox Self Adhesive Waterproof Tape over all the fixings.



Step 26

You are now ready to tile.

Draw lines from corners of the grate to the corners of the Showerlay as shown highlight where you should make tile cuts.

For further fitting instructions and product literature, visit:
www.marmx.co.uk